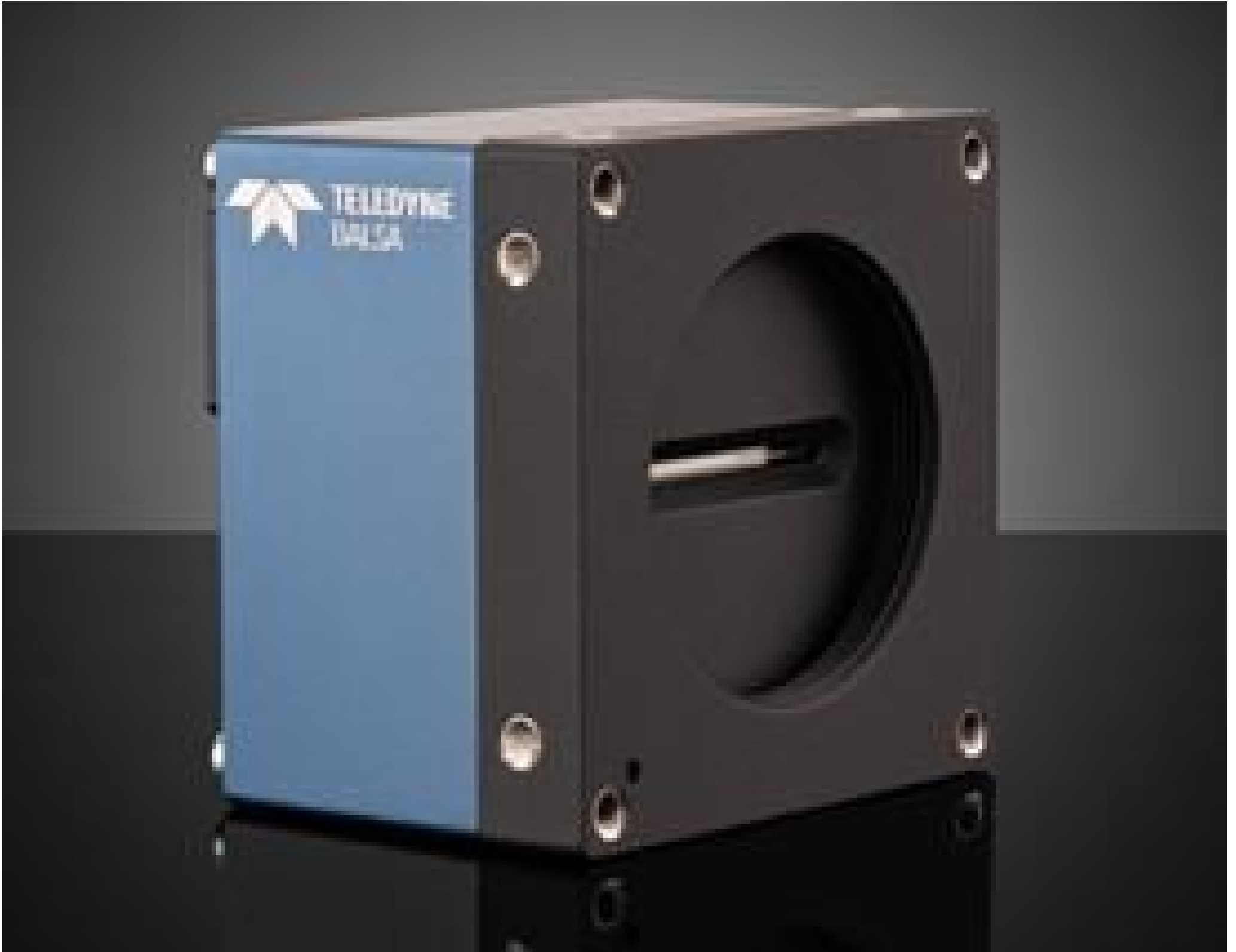


LA-GM-08K08A-00-R, DALSA Linea Line Scan GigE Camera

See More by [Teledyne DALSA](#)



Teledyne Imaging DALSA Linea GigE Line Scan Cameras - Front



Stock #71-781 NEW 3-4 DAYS

- 1 + €2.160⁰⁰

ADD TO CART

Qty 1+

€2.160,00

Volume Pricing

[Request Quote](#)

Prices shown are exclusive of VAT/local taxes

Product Downloads

SPECIFICATIONS

General

Type:
Monochrome Camera

Manufacturer:
Teledyne DALSA

Camera Family:
LINEA™

Model Number:
LA-GM-08K08A-00-R

Resolution (Pixels):
8192.00

Physical & Mechanical Properties

Dimensions (mm):
76 x 76 x 46.7 (excludes connectors and lens mount)

Weight (g):
380

Housing:
Full

Sensor

Type of Sensor:
DALSA Line Scan CMOS

Pixel Size, H x V (µm):
7.04 x 7.04

Pixel Depth:
8/12 bit

Dynamic Range (dB):
>60.00

Machine Vision Standard:
GigE Vision v1.2

Maximum Line Rate (kHz):
13 (45 TurboDrive)

Electrical

Power Consumption (W):
<7.5

Hardware & Interface Connectivity

Video Output:
GigE

Connector:
GigE, RJ45 with Screw Locks

Power Supply:
+12 to +24V DC HD15 Connector

Interface Port Orientation:
Back Panel

GPIO Connector Type:
HD15 (High Density)

Threading & Mounting

Mount:
M72 x 0.75

Environmental & Durability Factors

Operating Temperature (°C):
0 to +65

Storage Temperature (°C):
(Front Plate)

Regulatory Compliance

RoHS:
[Compliant](#)

Certificate of Conformance:
[View](#)

PRODUCT DETAILS

- Line Rates from 13 – 52kHz
- 2k, 4k, or 8k Resolution Options Available
- Simple Integration with Gigabit Ethernet Connectivity
- Teledyne TurboDrive™ Enabled
- Monochrome and Color Options Available

Teledyne DALSA Linea GigE Line Scan Cameras utilize a one-dimensional array of pixels to build up a two-dimensional image at a lower cost than area scan cameras. Featuring Teledyne DALSA's proprietary TurboDrive™ technology, these cameras can sustain line rates up to 52 kHz (and up to 80 kHz in burst mode) without straining your GigE network. These cameras allow settings to be changed every line, and cycle through up to five different user-controlled configurations. For example, each line can have a different light source, lighting angle, exposure time, and gain during a single pass with the camera. Teledyne DALSA Linea GigE Line Scan Cameras feature higher dynamic ranges than alternative image capture methods and are available with 2k, 4k, or 8k resolutions. These cameras are ideal for automated optical inspections, sorting systems, materials grading and inspections, and general-purpose machine vision applications. Download this [whitepaper](#) for more information on applications that would benefit from line scan camera technology. **Note:** An H15 cable is required for GPIO operation and is not included with these cameras.