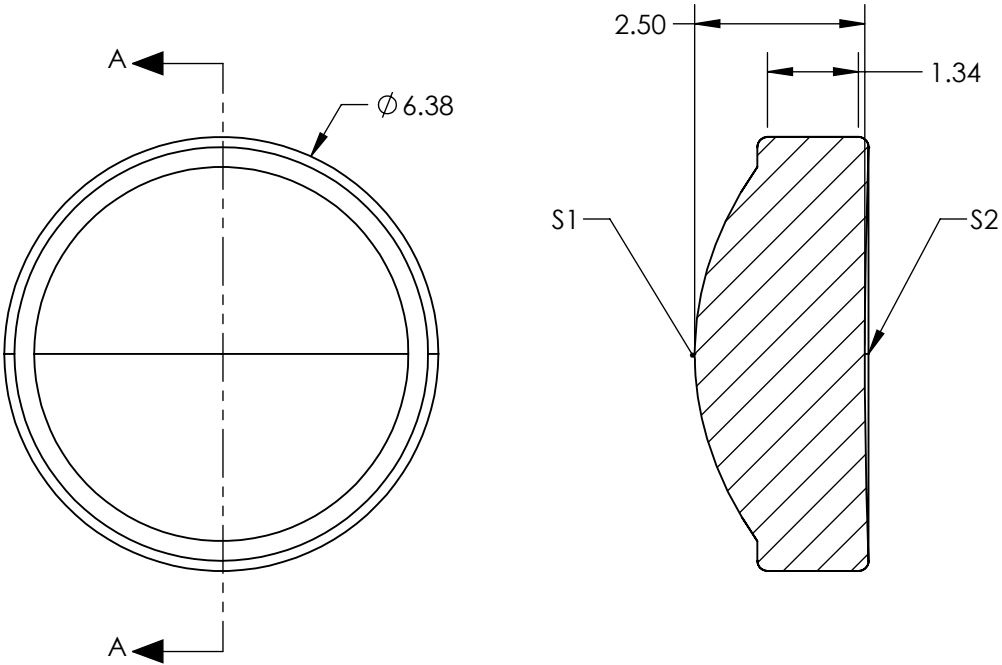



- NOTES:
- 1. SUBSTRATE:
M-LAF81
 - 2. NUMERICAL APERTURE: 0.40
 - 3. COATING: BBAR (775 - 805nm)
S1 & S2: R(AVG) <1.5% @ 775 - 805nm (Theoretical per Surface)
 - 4. WORKING DISTANCE (mm): 4.57 (not including cover glass)
 - 5. COVER GLASS THICKNESS (mm): 0.25
 - 6. TRANSMITTED WAVEFRONT ERROR, RMS @ 632.8nm: 0.049λ
 - 7. TRANSMITTED WAVEFRONT ERROR, RMS: 0.04λ @ 780nm
 - 8. CLEAR APERTURE (mm): 7.15



**FOR INFORMATION ONLY:
DO NOT MANUFACTURE
PARTS TO THIS DRAWING**

SPECIFICATIONS SUBJECT TO CHANGE WITHOUT NOTICE
DIMENSIONS ARE FOR REFERENCE ONLY

	S1	S2	THIRD ANGLE PROJECTION			TITLE	0.40 NA, 6.25mm FL, HOYA Molded Glass Aspheric Lens	
SHAPE	CONVEX	PLANO					DWG NO	13586
BEVEL	PROTECTED AS NEEDED	PROTECTED AS NEEDED						
			ALL DIMS IN	mm				