

NOTES:

1. SUBSTRATE:  
FUSED SILICA

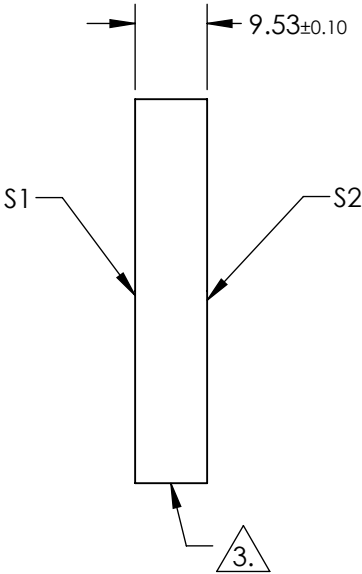
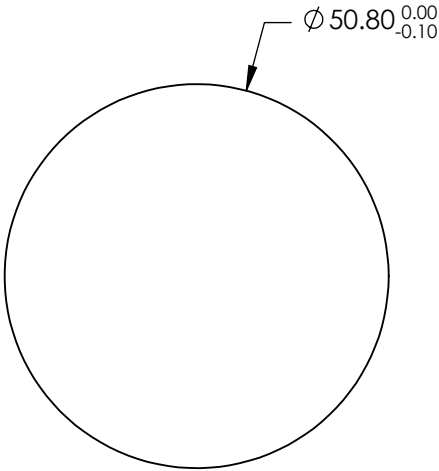
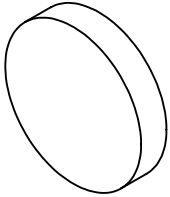
2. COATING (APPLY ACROSS CLEAR APERTURE)  
S1: Ultrafast (1260 - 1360nm)  
R(avg) S & P > 99.90% @ 1310nm @ 45° AOI  
R(avg) > 99.7% @ 1260 - 1360nm @ 45° AOI

GDD SPECIFICATION:  
GDDs: ±20 fs<sup>2</sup> @ 1260 - 1360nm @ 45° AOI  
GDDp: ±30 fs<sup>2</sup> @ 1285 - 1335 nm @ 45° AOI

S2: NONE

3. FINE GRIND SURFACE

4. ROHS COMPLIANT




**FOR INFORMATION ONLY:  
DO NOT MANUFACTURE  
PARTS TO THIS DRAWING**

SPECIFICATIONS SUBJECT TO CHANGE WITHOUT NOTICE  
DIMENSIONS ARE FOR REFERENCE ONLY

	S1	S2
SHAPE	PLANO	PLANO
SURFACE QUALITY	10 - 5	COMMERCIAL POLISH
CLEAR APERTURE	Ø 45.72	N/A
SURFACE FLATNESS	λ/8 over 70% CA	N/A
BEVEL	PROTECTED AS NEEDED	PROTECTED AS NEEDED

THIRD ANGLE  
PROJECTION

ALL DIMS IN      mm

 **Edmund Optics®**

TITLE

1310nm, 50.8mm Dia. x 9.53mm Thickness,  
Ultrafast Laser Mirror

DWG NO

28997

SHEET

56 OF 86