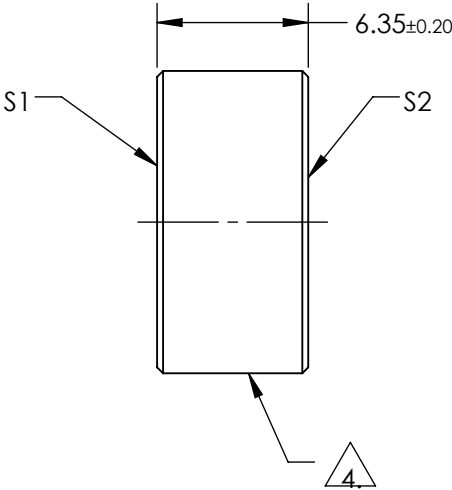
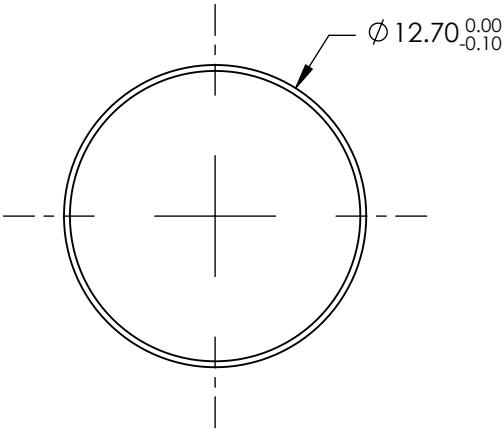



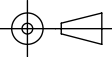
NOTES:

- 1. SUBSTRATE:  
FUSED SILICA
- 2. SURFACE S2 TO BE PARALLEL TO S1 TO WITHIN <3 ARCMIN
- 3. COATING (APPLY ACROSS COATING APERTURE)  
S1: DIELECTRIC  
R(ABS) ≥ 99.50% @ 532nm & 1064nm
- S2: NONE
- 4. FINE GRIND SURFACE
- 5. POWER, IRREGULARITY, SURFACE QUALITY, AND COATING SPECIFICATIONS APPLY ACROSS CLEAR APERTURE
- 6. ROHS COMPLIANT



**FOR INFORMATION ONLY:  
DO NOT MANUFACTURE  
PARTS TO THIS DRAWING**

SPECIFICATIONS SUBJECT TO CHANGE WITHOUT NOTICE  
DIMENSIONS ARE FOR REFERENCE ONLY

	S1	S2	 Edmund Optics®			
SHAPE	PLANO	PLANO		TITLE	Ø12.7mm x 6.35mm 532/1064nm DUAL BAND LASER MIRROR	
SURFACE ACCURACY P-V AT 632.8nm	λ/10	N/A		DWG NO	28974	SHEET 1 OF 1
SURFACE QUALITY	10-5	COMMERCIAL POLISH				
CLEAR APERTURE	Ø11.43	N/A				
BEVEL	PROTECTIVE AS NEEDED	PROTECTIVE AS NEEDED	ALL DIMS IN	mm		