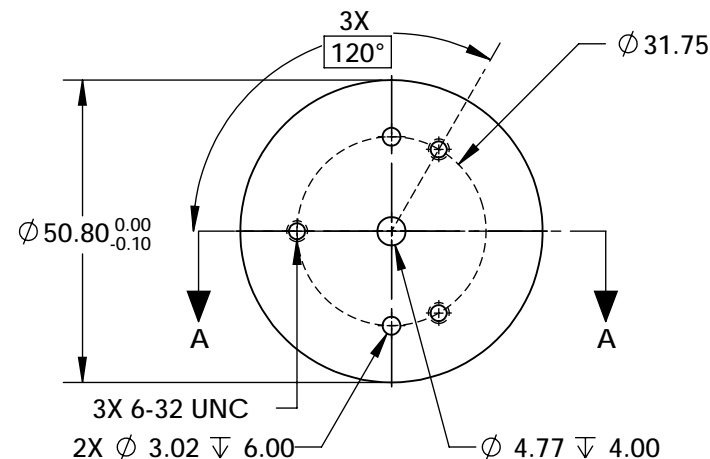
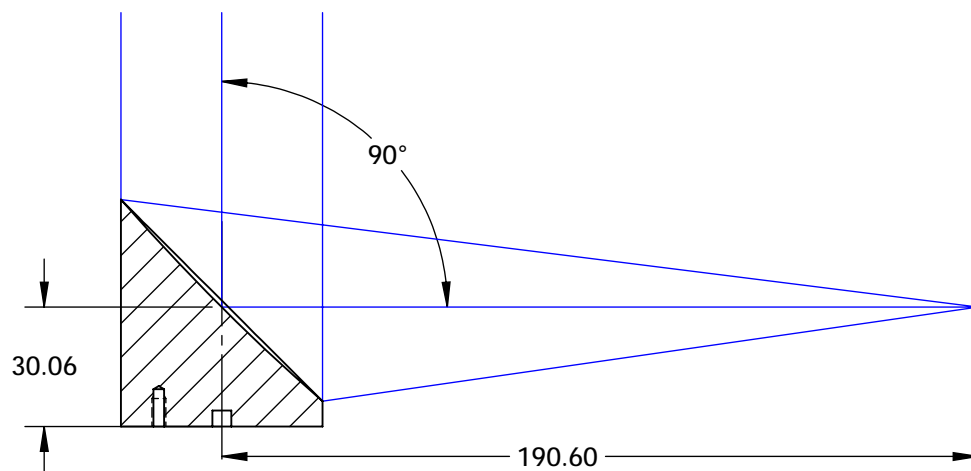
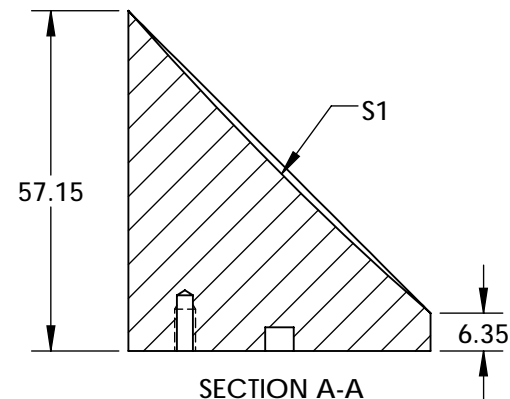


NOTES:

- SUBSTRATE MATERIAL:
ALUMINUM
- FINISH (EXCEPT SURFACE S1):
BLACK ANODIZED
- COATING (APPLY ACROSS CLEAR APERTURE)
S1: SILVER With MULTILAYER OVERCOAT (800 - 1150nm)
R(AVG) >99% @ 800 - 1150nm @ 0°
R(S) >99% @ 800 - 1100nm @ 45°
R(P) >98.5% @ ~850 - 1100nm @ 45°
- GDD: 0 ±30fs2 @ 800 - 1100nm
- SURFACE ROUGHNESS: <50 Å RMS
- FOCAL LENGTH TOLERANCE: ±1%
- ROHS COMPLIANT

**FOR INFORMATION ONLY:
DO NOT MANUFACTURE
PARTS TO THIS DRAWING**



SPECIFICATIONS SUBJECT TO CHANGE WITHOUT NOTICE
DIMENSIONS ARE FOR REFERENCE ONLY

REV. A	S1
SHAPE	PARABOLIC
SURFACE FIGURE AT 632.8nm (RMS)	$\lambda/4$
CLEAR APERTURE	90%
BEVEL	PROTECTIVE AS NEEDED



ALL DIMS IN mm



Edmund Optics®

50.8mm Dia. x 190.6mm EFL, 800-1150nm-
ULTRAFAST SILVER COATED, 50Å OAP
MIRROR

DWG NO 25605

SHEET
1 OF 1