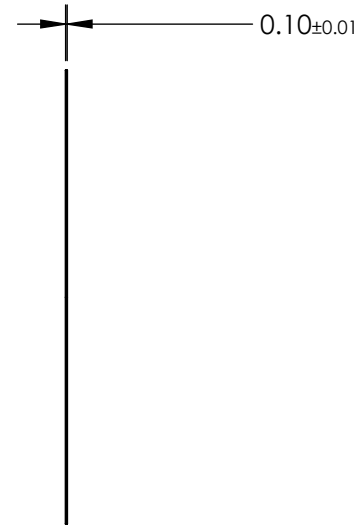
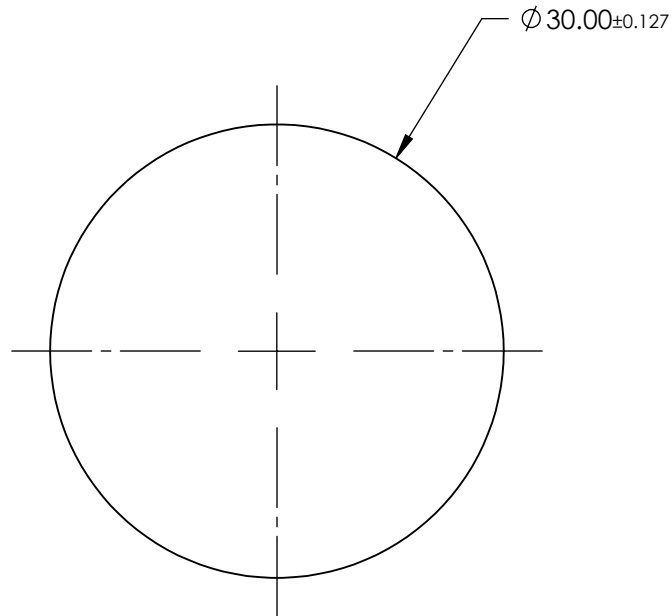
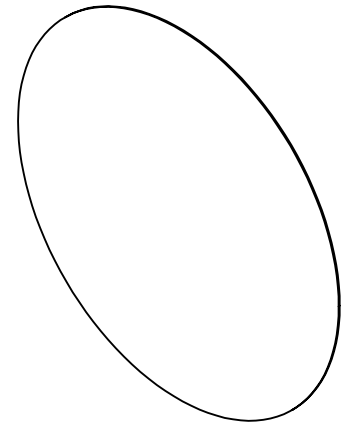


NOTES:

- 1. SUBSTRATE:
AS87ECO
- 2. COATING (APPLY ACROSS CLEAR APERTURE)

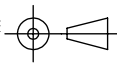
S1 & S2: NONE
- 3. ROHS COMPLIANT



**FOR INFORMATION ONLY:
DO NOT MANUFACTURE
PARTS TO THIS DRAWING**

SPECIFICATIONS SUBJECT TO CHANGE WITHOUT NOTICE
DIMENSIONS ARE FOR REFERENCE ONLY

	S1	S2
SHAPE	PLANO	PLANO
SURFACE QUALITY	80-50	80-50
SURFACE ROUGHNESS	< 0.50nm	< 0.50nm
CLEAR APERTURE	Ø 27.00	Ø 27.00
BEVEL	PROTECTED AS NEEDED	PROTECTED AS NEEDED

THIRD ANGLE PROJECTION 

ALL DIMS IN mm

 **Edmund Optics®**

TITLE: SCHOTT AS87ECO, 30mm Dia., 0.1mm Thick, Ultra-Thin Window

DWG NO: 20213

SHEET 1 OF 1