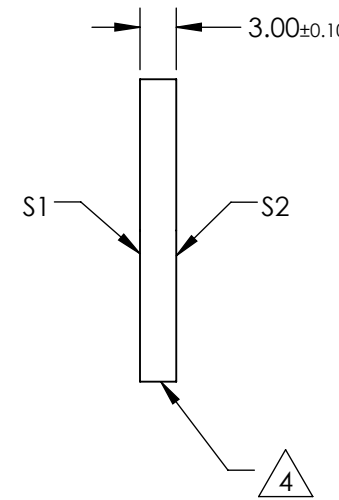
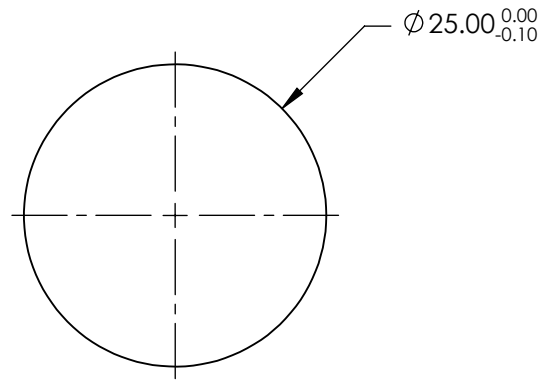
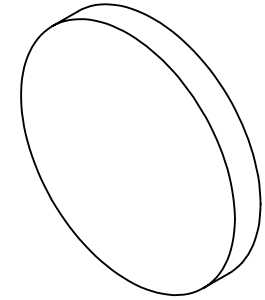


NOTES:

1. SUBSTRATE:  
EXCIMER GRADE UV FUSED SILICA
2. SURFACE S2 TO BE PARALLEL WITH S1 TO 5 arcsec
3. COATING (APPLY ACROSS CLEAR APERTURE)  
S1 & S2: R(ABS) < 0.25% @ 266nm, AOI: 0°
4. FINE GRIND SURFACE
5. RoHS COMPLIANT



**FOR INFORMATION ONLY:  
DO NOT MANUFACTURE  
PARTS TO THIS DRAWING**

SPECIFICATIONS SUBJECT TO CHANGE WITHOUT NOTICE  
DIMENSIONS ARE FOR REFERENCE ONLY

	S1	S2
SHAPE	PLANO	PLANO
SURFACE QUALITY	10 - 5	10 - 5
DESIGN WAVELENGTH	266nm	266nm
BEVEL	PROTECTIVE AS NEEDED	PROTECTIVE AS NEEDED

THIRD ANGLE PROJECTION

ALL DIMS IN mm

Edmund Optics®

TITLE

25mm DIA. 266nm LASER V-COAT, λ/20 FUSED SILICA WINDOW

DWG NO

48205

SHEET 1 OF 1